

(Chapters 5 & 6 One Mark and Two Marks) (Chapters 2 & 7 – Detail)

SECTION – I (10 X 1 = 10)

I. ANSWER ALL THE 15 QUESTIONS

II. CHOOSE THE CORRECT ANSWER FROM THE ALTERNATIVES GIVEN IN THE BRACKETS.

- Which is a non-renewable resource?
i) Bio-gas ii) Bio-Diesel iii) Natural gas iv) Green Diesel
- Sensitive whiskers are found in _____.
i) Dogs ii) Elephant iii) Deer iv) Bat
- The outer covering of kidney is _____.
i) Meninges ii) Pericardium iii) Capsule iv) Pleura
- Cuon alpinus* is the zoological name of
i) Chen Nai ii) Asiatic wild dog iii) Dholes iv) All the above
- In monotropa the special type of root which absorbs nourishment is the _____.
i) Haustoria ii) Mycorrhizal root iii) Clinging root iv) Adventitious root
- _____ is the chief component of natural gas.
i) ethane ii) methane iii) propane iv) butane
- The complete oxidation of one molecule of glucose in aerobic respiration produces ____ ATP molecules.
i) 28 ii) 32 iii) 38 iv) 39
- In annelids, excreta are removed by the special kidneys called _____.
i) Nephron ii) Nephridia iii) Excretory Tubes iv) Contractile vacuole
- The sedimented and floating materials are removed by this treatment process.
i) primary treatment ii) secondary treatment iii) tertiary treatment iv) peripheral treatment
- Assertion (A) : Mammalian heart is called myogenic heart.
Reason (R) : Heartbeat is regulated by a specialized muscle bundle (pacemaker) in mammals.
i) Both 'A' and 'R' are true and 'R' explains 'A'. ii) Both 'A' and 'R' are true but 'R' doesn't explain 'A'.
iii) 'A' is true but 'R' is false. iv) A is false but 'R' is true.

SECTION – II (15 X 2 = 30)

I. ANSWER FOR ANY TWENTY QUESTIONS.

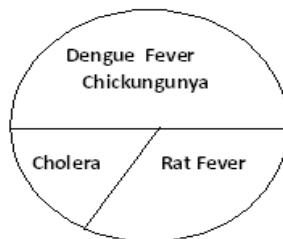
- Mention the two unique characteristics of mammals.
- Match the following:

Water borne diseases	Water related diseases	Water based diseases
Typhoid	Dengue	Scabies
Malaria	Amoebiasis	Cholera
Filariasis	Lice	Trachoma

- Name the three important blood proteins seen in plasma. Add a note on their functions.
- Fill up the empty boxes with suitable answers with respect to the valves of a mammalian heart.

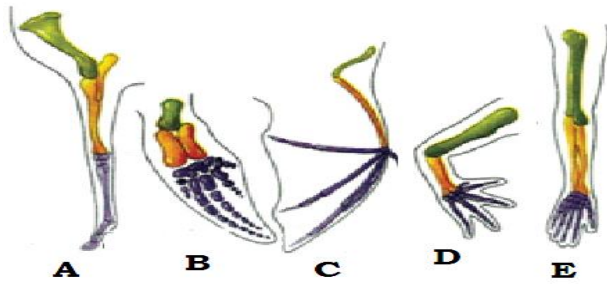
Valve(s)	Location	Function
-----	At the right auricular ventricular aperture	Regulates the flow of blood from right auricle to right ventricle
Aortic valve	At the base of Aorta	-----

- Draw and label the Nephron.
- The pie diagram represents a survey result of infectious diseases in a village during 2008 – 2009. Analyse it and answer the following:



- Which diseases affect the majority of the population?
 - How are these diseases transmitted?
 - Mention any three measures that can control the other two diseases.
17. The Master chemists of our body are the kidneys. Justify.

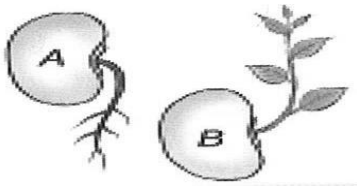
18. Identify the forelimb of animals A, B, C, D, and E.



19. Find the odd one out:

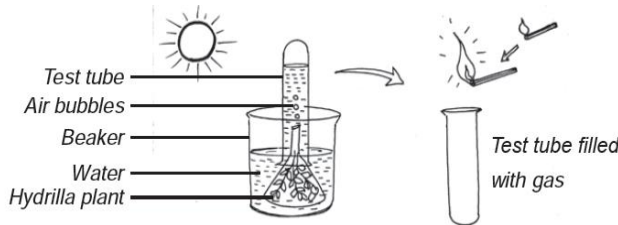
- i) bio-alcohol, green diesel, bio-ethers, petroleum
- ii) cholera, typhoid, scabies, dysentery

20. Observe the diagram



- i) Mention the type of movements shown in figure A and B.
- ii) How does this movement differ from the movement of mimosa?

21. Observe the following experiment:



- i) Name the phenomenon it depicts and the gas that is released.
 - a) Respiration, CO_2
 - b) Photosynthesis, O_2
 - c) Transpiration, H_2O
 - d) Excretion, N_2
 - ii) What is photosynthesis? Write a balanced equation for this bio-chemical reaction.
22. What is the length of the alimentary canal in human beings? List out the parts of the gastro-intestinal tract in the correct sequential order based on the passage of food.
23. Wind power is generated from uneven heating of the earth's surface by the sun and the hot core.
- i) Which country is called the country of winds?
 - ii) Which country leads the world in harnessing wind energy?

24. Match the following

- | | |
|------------------|---------------------|
| i. Haemodialysis | a. Sieve Tube |
| ii. Phloem | b. Insects |
| iii. Ganglia | c. Fishes |
| iv. Ammonotelic | d. No re-absorption |

25. A non-renewable resource is a natural resource, if it is replaced by natural process at a rate equal to or faster than its rate of consumption by humans.

Read this statement and say whether it is correct or incorrect. If it is incorrect, give the correct statement.

SECTION – III (2 X 5 = 10)

ANSWER ANY TWO QUESTIONS BY CHOOSING ONE QUESTION FROM EACH PART. EACH QUESTION CARRIES FIVE MARKS. DRAW DIAGRAM WHEREVER NECESSARY.

PART - I

26. Kala has delivered a baby,
- i) Suggest the immunization schedule for the baby, in the first six months.
 - ii) What are the diseases that can be cured as per the schedule?
27. List out the various diseases caused due to nutritional deficiency. Add a note on their symptoms.

PART - II

28. List out the harmful effects of burning coal.
29. In your locality people are affected due to water scarcity. What measures will you take to deal with the problem of water scarcity?